



Lorraine Crescent

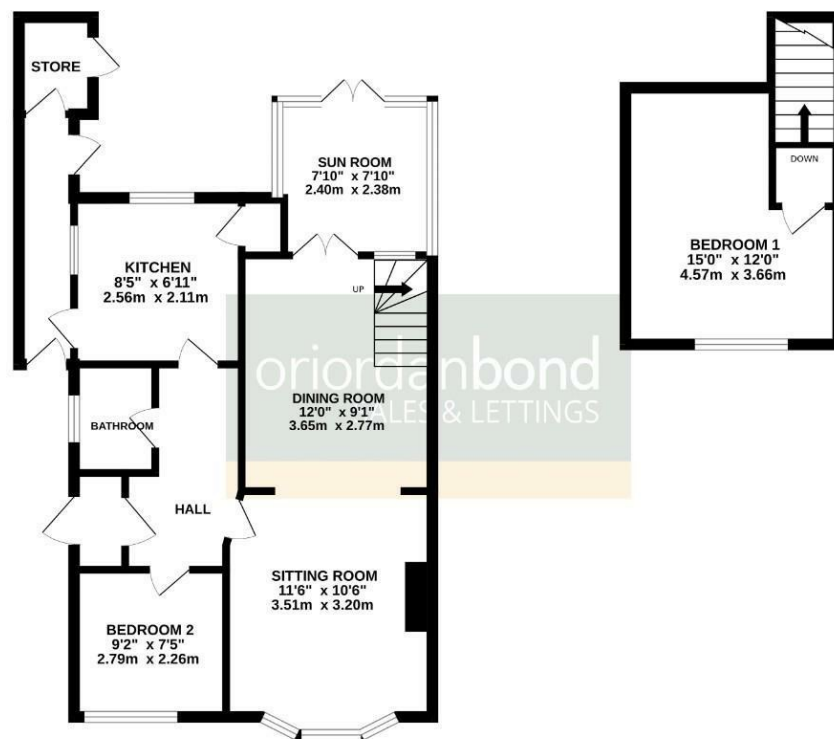
Spinney Hill, Northampton

oriordanbond
SALES & LETTINGS



GROUND FLOOR

1ST FLOOR



TOTAL FLOOR AREA: 815sq ft (75.7 sq.m.) Approx.
While every attempt has been made to ensure the accuracy of the floorplan contained here, measurements of doors, windows, rooms and any other items are approximate and no responsibility is taken for any error, omission or mis-statement. This plan is for illustrative purposes only and should be used as such by any prospective purchaser. The services, systems and appliances shown have not been tested and no guarantee is given to their operability or efficiency can be given.
Made with Metrepx ©2020

Lorraine Crescent

Spinney Hill

NN3 6HW

OFFERS OVER £210,000

Offered for sale is this two bedroom semi-detached dormer bungalow, situated in the popular location of Spinney Hill, within walking distance to local shops, easy access to the town centre and good schooling to include Northampton School for Girls.

The accommodation comprises entrance hall, sitting room open to dining room, sun room, kitchen, utility area, double bedroom and shower room to the ground floor with a further double bedroom to the first floor. Outside is frontage providing off road parking for two cars with secure side access to an enclosed and private rear garden with patio area and brick store. Further benefits include uPVC double glazing and gas radiator heating. (B/600/M)

Additional information

- Council Tax Band: B
- Energy Efficiency Rating: D

Viewing

Viewing strictly by appointment – details below

Disclaimer

O'Riordan Bond Estate Agents Limited has not tested apparatus, equipment, fittings or services and so cannot verify they are in working order. The buyer is advised to obtain verification from their solicitor or surveyor.

O'Riordan Bond Parklands Sales

01604 639007

parklands@oriordanbond.co.uk

